

## MLS Area 1A

## Residential Statistics

## Independence Title

August 2021

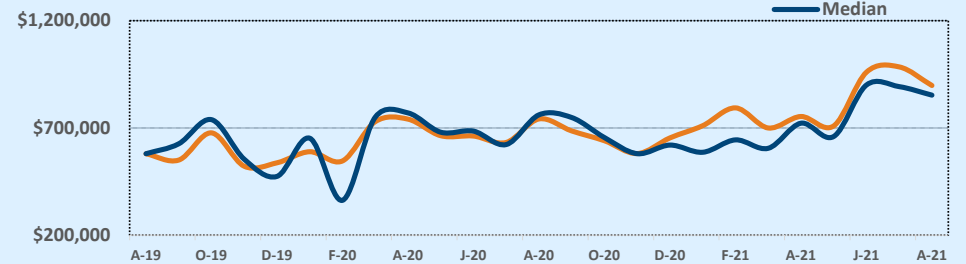
Listings	This Month			Year-to-Date		
	Aug 2021	Aug 2020	Change	2021	2020	Change
Single Family Sales	19	24	-20.8%	161	163	-1.2%
Condo/TH Sales	16	12	+33.3%	131	104	+26.0%
<b>Total Sales</b>	<b>35</b>	<b>36</b>	<b>-2.8%</b>	<b>292</b>	<b>267</b>	<b>+9.4%</b>
New Homes Only	--	1	--	--	6	--
Resale Only	35	35	--	292	261	+11.9%
Sales Volume	\$31,421,307	\$26,707,619	+17.6%	\$237,770,465	\$178,202,250	+33.4%
New Listings	36	61	-41.0%	313	336	-6.8%
Pending	4	46	-91.3%	4	287	-98.6%
Withdrawn	2	3	-33.3%	10	20	-50.0%
Expired	--	1	--	3	13	-76.9%
Months of Inventory	0.9	0.9	+2.9%	N/A	N/A	--

Average	This Month			Year-to-Date		
	Aug 2021	Aug 2020	Change	2021	2020	Change
List Price	\$823,456	\$749,667	+9.8%	\$757,152	\$669,395	+13.1%
List Price/SqFt	\$365	\$310	+17.8%	\$345	\$289	+19.3%
Sold Price	\$897,752	\$741,878	+21.0%	\$814,282	\$667,424	+22.0%
Sold Price/SqFt	\$394	\$307	+28.4%	\$371	\$289	+28.5%
Sold Price / Orig LP	107.1%	97.9%	+9.4%	106.8%	98.9%	+8.0%
Days on Market	9	22	-56.9%	14	22	-37.5%

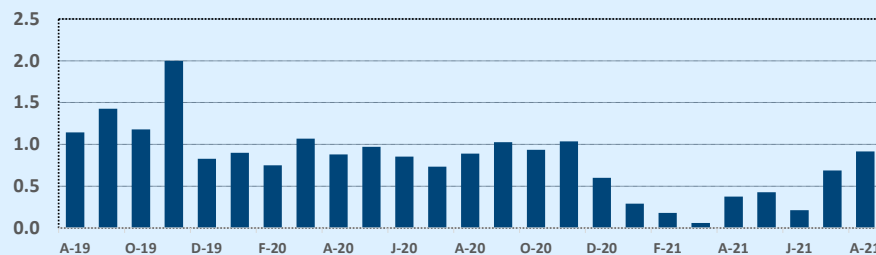
Median	This Month			Year-to-Date		
	Aug 2021	Aug 2020	Change	2021	2020	Change
List Price	\$825,000	\$776,950	+6.2%	\$699,950	\$699,000	+0.1%
List Price/SqFt	\$363	\$322	+12.8%	\$334	\$287	+16.3%
Sold Price	\$852,808	\$761,000	+12.1%	\$744,500	\$685,000	+8.7%
Sold Price/SqFt	\$381	\$320	+19.1%	\$350	\$283	+23.6%
Sold Price / Orig LP	104.0%	99.0%	+5.1%	104.0%	99.0%	+5.1%
Days on Market	6	5	+20.0%	5	5	--

Price Range	This Month			Year-to-Date		
	New	Sales	DOM	New	Sales	DOM
\$149,999 or under	--	1	1	1	2	95
\$150,000- \$199,999	--	1	6	11	12	16
\$200,000- \$249,999	2	2	7	25	15	10
\$250,000- \$299,999	3	2	16	27	21	10
\$300,000- \$349,999	10	3	6	28	19	11
\$350,000- \$399,999	3	1	4	17	18	15
\$400,000- \$449,999	1	2	20	9	12	8
\$450,000- \$499,999	1	1	42	9	14	13
\$500,000- \$549,999	2	1	10	7	6	58
\$550,000- \$599,999	1	--	--	7	5	21
\$600,000- \$699,999	3	--	--	18	14	22
\$700,000- \$799,999	1	--	--	24	21	12
\$800,000- \$899,999	4	6	10	28	21	16
\$900,000- \$999,999	2	--	--	17	18	6
\$1M - \$1.99M	3	14	7	81	85	12
\$2M - \$2.99M	--	1	6	4	9	15
\$3M+	--	--	--	--	--	--
<b>Totals</b>	<b>36</b>	<b>35</b>	<b>9</b>	<b>313</b>	<b>292</b>	<b>14</b>

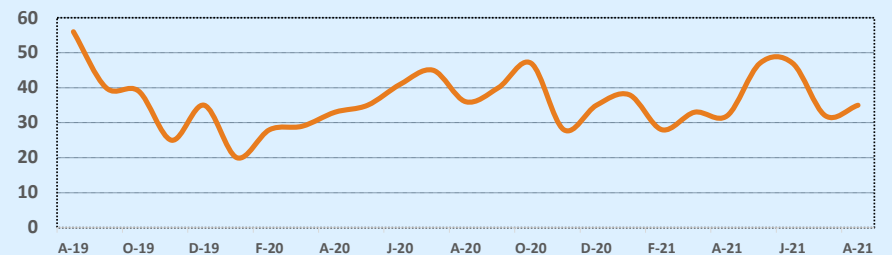
Average & Median Sales Price - Last Two Years



Months of Inventory - Last Two Years



Number of Sales - Last Two Years



Based on information from the Austin Board of REALTORS® (alternatively, from ACTRIS). Neither the Board nor ACTRIS guarantees or is in any way responsible for its accuracy. The Austin Board of REALTORS®, ACTRIS and their affiliates provide the MLS and all content therein "AS IS" and without any warranty, express or implied. Data maintained by the Board or ACTRIS may not reflect all real estate activity in the market.